



The Port OF Hueneme

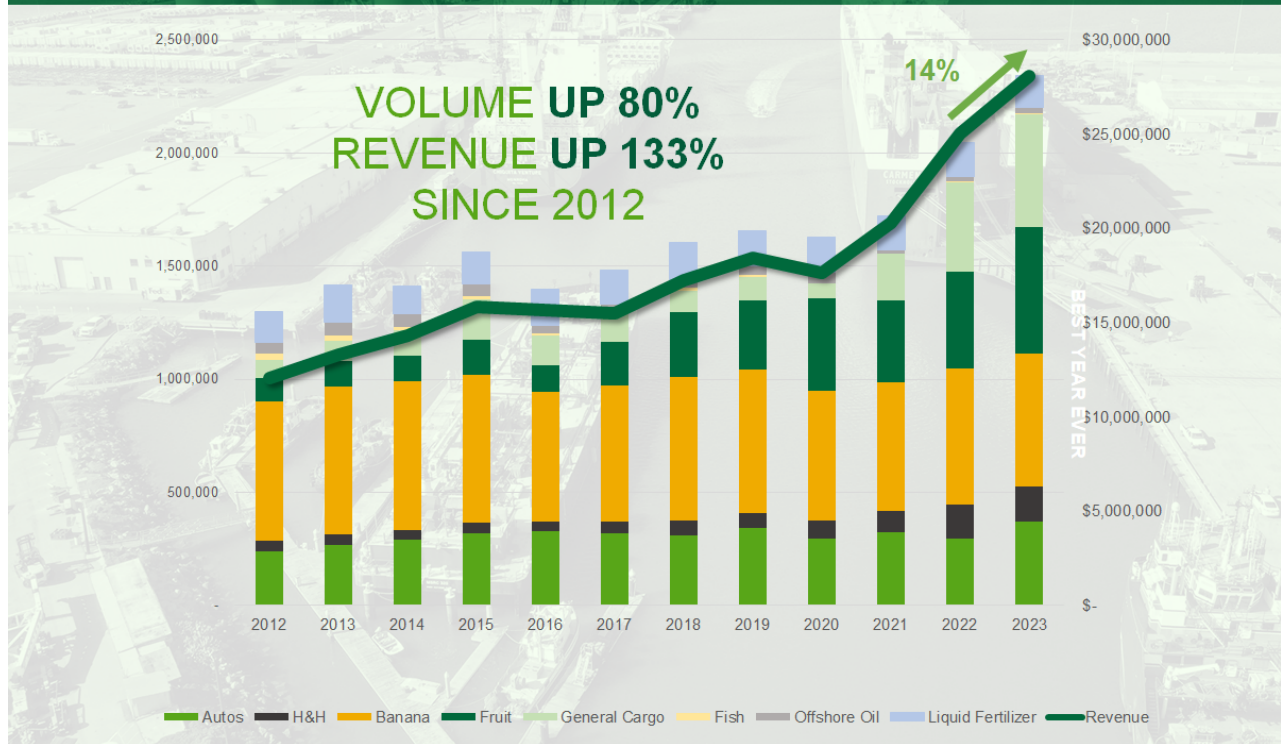
Oxnard Harbor District

PRESS KIT *2024*

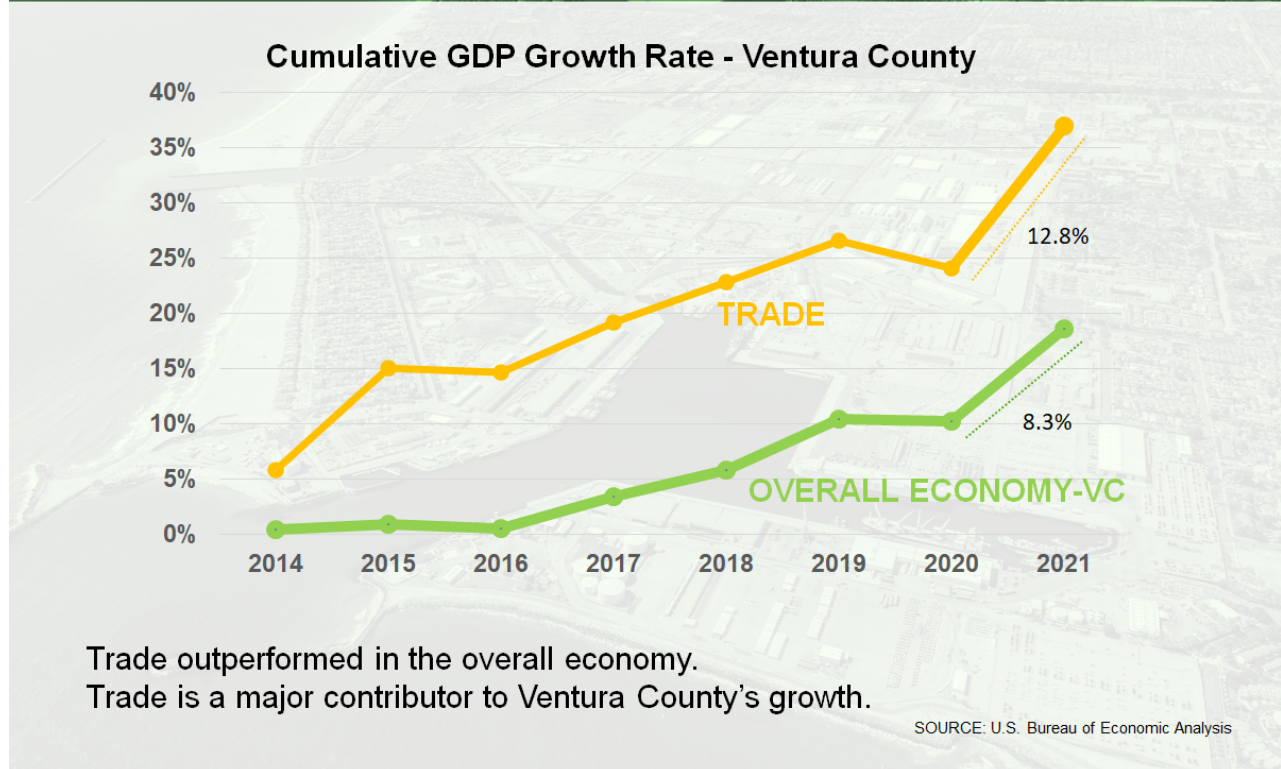


CARGO PERFORMANCE

2012-2023



High Performing Segment of Ventura County GDP ECONOMIC VITALITY

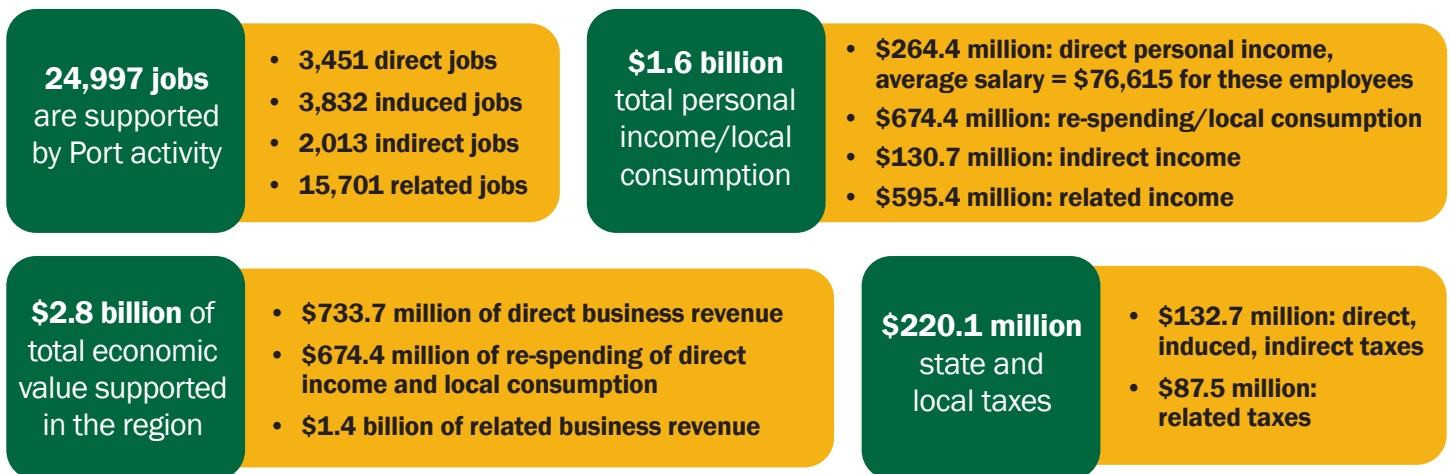


2024 Port of Hueneme ECONOMIC IMPACTS

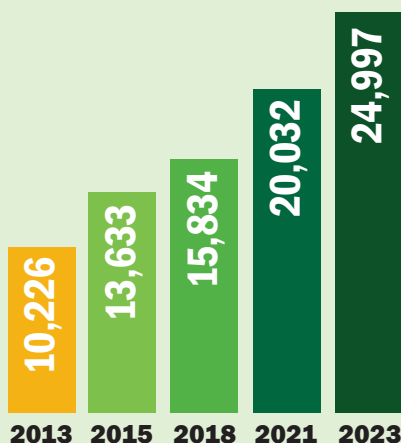


We Make Cargo Move

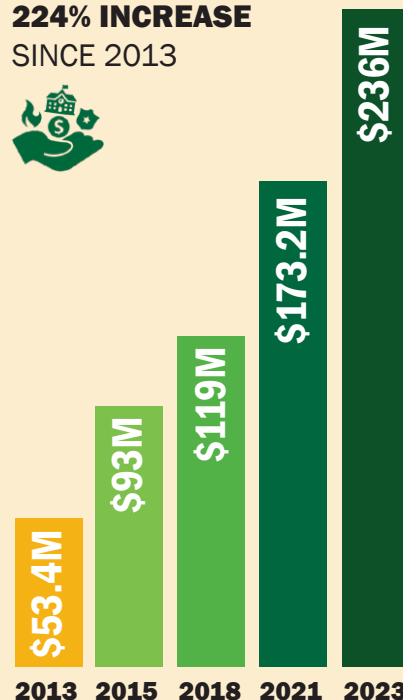
The Port of Hueneme is one of the most productive and efficient commercial trade gateways for niche cargo on the West Coast. The Port consistently ranks among the top ten U.S. ports for automobiles and fresh produce. A pivotal component in the intermodal logistics supply chain, the Port of Hueneme is a major contributor to the economic health of Ventura County and Southern California. The following is a snapshot of the Port's key economic contributions.



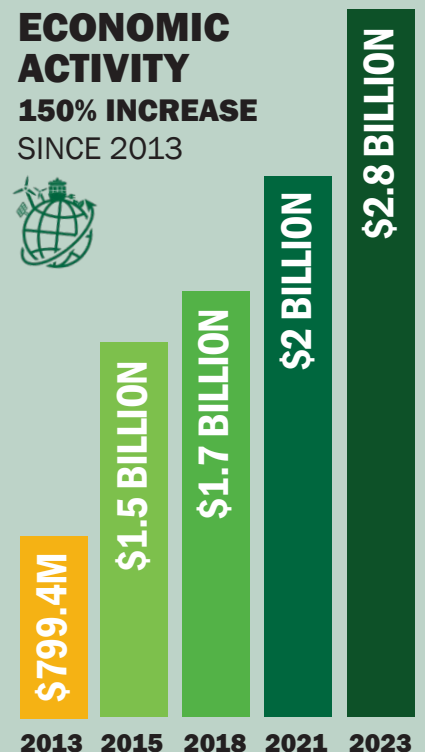
JOBS 144% INCREASE SINCE 2013



TAX REVENUE 224% INCREASE SINCE 2013



ECONOMIC ACTIVITY 150% INCREASE SINCE 2013



Trade Highlights

**2.4 MILLION TONS UP
80% SINCE 2012**

**\$16
BILLION IN
CARGO
ANNUALLY**



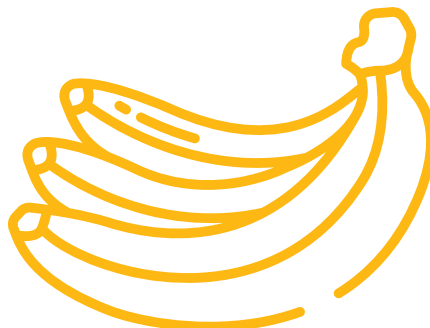
#6 US AUTO PORT



**23% AUTO IMPORTS
ARE ELECTRIC
VEHICLES!**

**#1 WEST COAST BANANA PORT
& REFRIGERATED CARGO PORT**

**OVER
5 BILLION
BANANAS
IMPORTED A YEAR**



P.O. Box 608
333 Ponoma St.
Port Hueneme, CA
93044-0608

Tel: 805-488-3677
Fax: 805-488-2620

www.portofhueneme.org



We Make Cargo Move

State of the Port of Hueneme Economy



FY 2023 Performance over FY 2022
July 1, 2022 - June 30, 2023 Annual Tonnage

Economic Impacts (2023 Analysis) Cargo Handling Facts

- \$16 Billion in Cargo Value
- \$2.8 Billion Total Economic Impact
- 24,997 Total Jobs Related to Port Activity
- \$236 Million in Tax Revenues
- Over 3,000 Foreign & Domestic Vessel Calls
- 2.4 Million Metric Tons of Total Cargo
- 375,000 Autos; 11,062 High & Heavy Units

Overall Cargo Growth: 14%

Import Activity

Auto Imports

- ↑ 31%
- 361,038 tons

Heavy Equipment Imports (Project cargo)

- ↑ 16%
- 126,528 tons

Fruit & Vegetables Imports (Pineapple, Melons)

- ↑ 3%
- 533,646 tons

Banana Imports

- ↓ 2.3%
- 619,814 tons

Fertilizer Imports

- ↓ 42%
- 85,617 tons

Export Activity

Auto Exports

- ↑ 35%
- 15,636 tons

Heavy Equipment Exports (project cargo)

- ↓ 40%
- 5,080 tons

Fruit & Vegetables Exports (Apples, Pears, Oranges, Grapes, Stone Fruits, Vegetables)

- ↓ 19.0%
- 79,219 tons

BOARD OF HARBOR COMMISSIONERS

Celina L. Zacarias President
Jess J. Ramirez Vice President
Jason T. Hodge Secretary
Mary Anne Rooney Commissioner
Jess J. Herrera Commissioner

PORT MANAGEMENT

Kristin Decas CEO & Port Director



We Make Cargo Move

Updated 4.5.2024

State of the Port of Hueneme Economy

FY 2022 over FY 2023 Performance

July 1, 2022 - June 30, 2023 Annual Tonnage



Export Activity

General Cargo

- ↓ 44%
- 70,078 tons

Domestic Cargoes

Shallow Draft Cargo (Fish, lube oil, vessel fuel)

- ↑ 11%
- 16,708 tons

Domestic Off shore Oil Equipment Cargo

- ↓ 0.7%
- 36,525 tons

Vehicle Processing Centers

WW (Wallenius-Wilhelmsen), GLOVIS America, BMW

Vehicle Brands

BMW, MNI, Rolls Royce, Hyundai, Kia, Volvo, Jaguar, Land Rover, Maserati, Aston Martin, Mitsubishi, General Motors, Honda, Toyota, Nissan, Tesla, Subaru, INEOS

Ro-Ro/High and Heavy Products

Caterpillar, John Deere, New Holland, Case, Hyster

Agricultural and Fresh Fruit Customers

Chiquita, Del Monte, Yara, Maersk

Distribution Centers & Warehousing

Channel Islands Logistics, Del Norte Warehousing, Lineage Logistics, Seabord Produce, Western Precooling, Anacapa Fresh, Mission Produce

Shipping Lines

Champion Tankers, COSCO, EUKOR Car Carriers, Glovis, Maersk, Network Shipping Ltd. (Del Monte, Great White Fleet (Chiquita), K-Line, Mitsui OSK Lines, Norbulk, NYK Lines, Wallenius Wilhelmsen Lines

Domestic Customers

Oxnard Unloading Services, LLC, EXXON, Freeport McMoRan, DCOR

Service Providers

Brusco Tug and Barge, TraTide Marine Fuels, Port Hueneme Pilots Association, San Pedro Port Services, T&T Truck and Crane, OST Truck & Cranes, Allied Universal Security, National Response Corporation, Port Hueneme Ice

Stevedores

Ports America, SSA Marine, Pacific Ro-Ro

Union Labor

ILWU, Teamsters, Operating Engineers

P.O. Box 608
333 Ponoma St.
Port Hueneme, CA
93044-0608

Tel: 805-488-3677
Fax: 805-488-2620

www.portofhueneme.org



Foreign Trade Zone #205



WORLD TRADE CENTER
OXNARD

Updated 4.5.2024

ENVIRONMENTAL SUMMARY



The Port of Hueneme is committed to protecting the environment and supporting a healthy quality of life for our community. The Port plays a valuable role in the health and vitality of the local and regional economies and takes very seriously its role as an active community partner and as an environmental steward. Sharing the Port's environmental stewardship efforts helps build understanding about the Port's activities and priorities and builds support and trust through community engagement which is one of the most essential components of the Port's work.

The Port of Hueneme's forward-looking environmental initiatives include:

1. Industrial operations decarbonization. Trucking and cargo handling equipment transition to zero emissions on and off Port, functioning as a regional leader in implementation of ZE medium and heavy-duty equipment and local catalyst for installation of clean energy infrastructure not just on Port but in the community as well.
2. PHRESH Community Air Quality Project. Through the Port of Hueneme Reducing Emissions Supporting Health (PHRESH) campaign, the Port has installed the only EPA reference grade air quality monitor in south Oxnard to provide local air quality data to the community to empower local knowledge.
3. Green Job Training Program in coordination with other workforce development groups like LA Clean Tech Incubator, VC Workforce Development Board, local labor unions to bring the jobs of the future to Ventura County.
4. Partnerships with entrepreneurs, scientists, and other stakeholders for development of an aquaculture campus on Port to develop foods and jobs of the future for equitable, decarbonized food production.
5. Providing new opportunities for the region and local community in clean energy job development, demonstration of zero emission equipment at scale, introducing STEM students to more than \$3 million of high-tech equipment in on Port eco-maker space to develop and test ideas and projects.
6. Clean truck initiatives to help develop a clean trucking coalition in Oxnard and get funding for zero emission (ZE) trucks and infrastructure from Sacramento and Washington, D.C. Partnering with Southern California Edison, local environmental groups, and local trucking companies to share information about transitioning to ZE trucking in the Oxnard region.
7. Supporting restoration of Ormond Beach with community and stakeholders such as the City of Oxnard, City of Port Hueneme, Coastal Commission, Nature Conservancy to achieve habitat restoration, safe equitable access, and recreation and education opportunities.

The Port of Hueneme's Environmental History and Achievements:

- In 2012, the Port of Hueneme completed a comprehensive Environmental Management Framework (EMF).
 - * *Port developed set of environmental management goals in air quality, water quality, marine resources, soil and sediment, energy management and climate change adaptation*
- In 2014, the Port of Hueneme Installs a high-voltage, shore-side power system which allows ships to shut down traditional fueled engines which substantially reduces ship emissions at berth.
 - * *Since 2008 the Port of Hueneme has achieved an 81% reduction in diesel particulate matter (DPM) emissions from our ships at berth.*
- In 2017, the Port of Hueneme began installing new cutting-edge LED lighting to significantly reduce energy use and associated emissions.
- In 2019, the Port of Hueneme developed and began implementing a zero-waste policy to reduce solid waste generation.
- Since 2019, the Port of Hueneme began development of a clean air campaign in partnership with our local air quality regulatory agency, the Ventura County Air Pollution Control District (VCAPCD). The Plan will be called: Port of Hueneme Reducing Emissions & Supporting Health (PHRESH). This comprehensive plan will include:
 - * *An assessment of the regulatory setting in which the Port operates*
 - * *A detailed review of the Port's emissions inventory, including an assessment of possible emissions growth scenarios*
 - * *The installation of the only EPA reference grade air quality monitor in the area*

The Port of Hueneme's Environmental History and Achievements Continued:

- * Establishment of specific air quality goals for the Port for both criteria pollutants and greenhouse gas*
- * A summary of our community involvement*
- * Analysis of possible emissions control strategies and cost, and cost benefit analyses,*
- * Estimates of funding and implementation and resources needed*
- * The Port purchased and installed the only reference grade air quality monitors in South Oxnard at Haycox Elementary School and has made the data publicly available through portcaresaboutair.org. This monitoring suite measures particulate pollutants which are a byproduct of fossil fuel combustion.*
- * In August of 2023, the Port was granted \$500k by the US EPA to build upon the existing monitoring network to add four (4) additional monitors throughout the Oxnard Plain near historically disadvantaged communities.*
- * As a part of PHRESH, the Port is also developing a comprehensive Climate Action, Adaptation and Resiliency Plan to help guide the Port in future resiliency planning and decarbonization projects*
- The Port of Hueneme engineered and installed brand new electrical infrastructure to power a new generation of electric, ZE cargo handling equipment, including the newly arrived hybrid electric mobile harbor cranes and ZE trucks
- The Port of Hueneme is committed to bringing economic equity to the region by providing employment opportunities for green jobs while pushing forward an agenda of transitioning Port equipment from diesel to fewer polluting fuels of the future in collaboration with our community partners.
- In pursuit of the Port's goal of decarbonizing cargo operations and helping bring cleaner air to our community, the Port of Hueneme's Board approved the purchase of the first two zero emission heavy duty Port trucks in Ventura County. These American made Kalmar battery powered trucks will help to move containers of fresh produce around the Port while producing no pollution. The trucks are part of a project in conjunction with the Port of Los Angeles funded by the California Air Resources Board, that will also include the installation of power vaults to run the Port's cranes on electrical power and the use of a hydrogen fuel cell big rig truck.
- The Port of Hueneme, Naval Base Ventura County, and the Army Corps of Engineers dredged the harbor entrance, and the sand was deposited locally to support Hueneme Beach and fight beach erosion.
- The Port of Hueneme is protecting water quality through stormwater management and implementing new stormwater filters systems on Port.
- The Port of Hueneme has partnered on a California Energy Commission (CEC) grant funded community outreach and technical assessment of the future clean energy needs for the Port that will enable the full transition to ZE operations at the Port. This ZE Blueprint will be the Port's roadmap to implementation of its ambitious climate action goals.
- On November 15, 2021, the Port of Hueneme's Board of Harbor Commissioners, in a unanimous display of support, voted to adopt a resolution to make their commitment to decarbonizing operations at the Port of Hueneme as part of its pursuit of a zero-emission future. A commitment to additional reductions of ocean-going vessel emissions along with a committed to the continued growth of the Community Air Quality Monitoring Program as well as a goal for port short haul/drayage trucking to be zero emission by at least 2035 are some of the commitments the Port of Hueneme has adopted. The passage of the resolution is viewed as a formal way for the Port to commit to a future with zero greenhouse gas emissions and decarbonized operations as the first step to a clean energy future. The Port of Hueneme views this move as a benefit to residents and stakeholders as well as a commitment to increase energy resilience by utilizing the recommendations from the SPARC Blueprint to further invest in the development of decarbonization.
- In 2022, the Port of Hueneme received its highest ever scores from Green Marine, the preeminent verification agency for maritime facility sustainability. Green Marine verification is predicated upon building comprehensive environmental programs which go well above and beyond mere legal compliance with regulation.
- The Port of Hueneme is moving forward with the planning for a new system of shoreside power to provide clean grid electrical power to vessels berthing at its north terminal which typically includes auto carrier and RORO vessels. This state-of-the-art system will help to all but eliminate emissions from ocean going vessels while they are berthed at the Port of Hueneme.

Ro-Ro Green Corridors



Ro-Ro Goals

- All terminals to be fully zero emission by 2030
- Procurement of bonnet barge emissions capture and service system by Fall 2024 to service container ships and ro-ro vessels
 - Captures emissions allowing Ro-Ro vessels to operate as zero emission at-berth
 - Will act as mitigation during North Terminal shorepower outage
 - After North Terminal shorepower rebuild, bonnet will solely service ro-ro
- Development of Ro-Ro igus north terminal shoreside power system by end of 2025
 - Plugs Ro-Ro vessels into grid power at-berth to operate at zero emissions

Ro-Ro ARB REGS

- At-Berth regulation effective for Ro-Ro January 1, 2025
 - Compliance fee of \$1,900 each hour vessel is not plugged in or emissions capture system not deployed
- Due to catastrophic rain event in December 2023, Port of Hueneme subject to exemption (d) Terminal Safety and Emergency Event of At Berth Regulation Section 93130.10

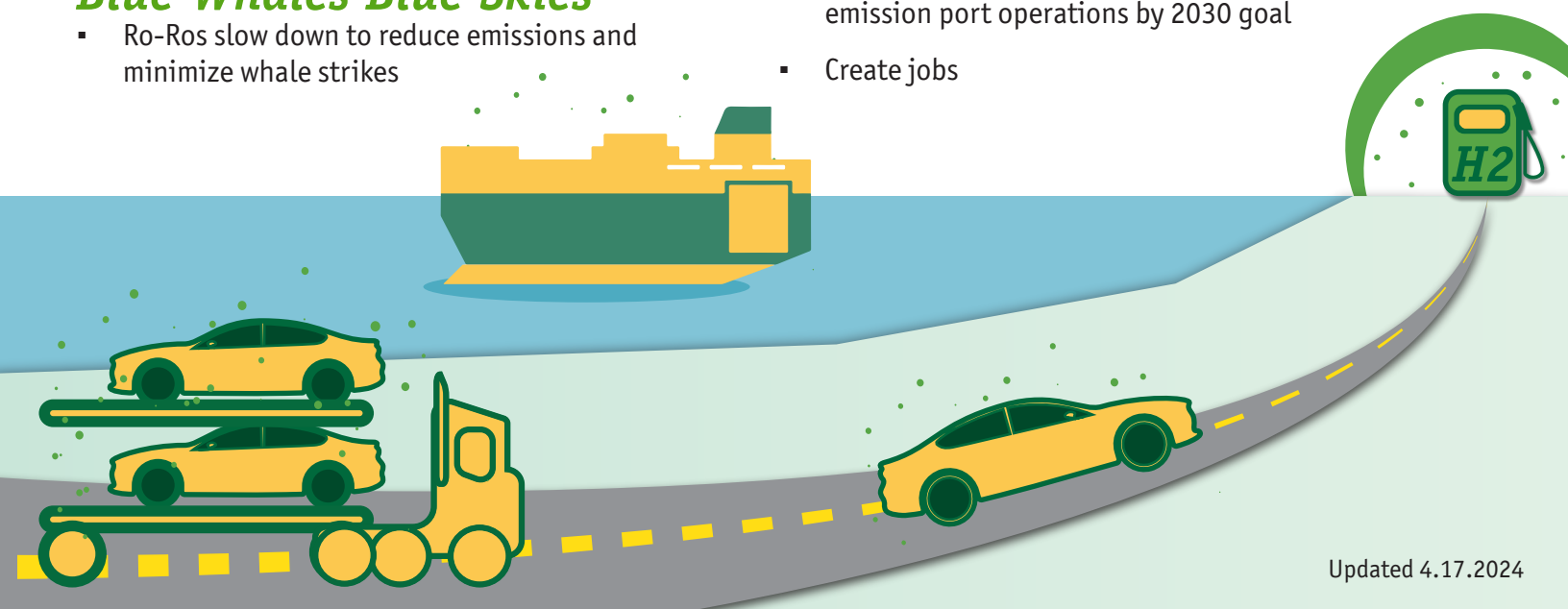
Hydrogen at Hueneme

Exploring hydrogen as a potential fuel alternative to:

- Help the Port build energy resilience in the face of growing load demands
- Drive the transition for zero emission heavy-duty vehicles
- Provide more options for the energy transition to zero emission port operations by 2030 goal
- Create jobs

Blue Whales Blue Skies

- Ro-Ros slow down to reduce emissions and minimize whale strikes





Committed to Community

The Port is committed to protecting the environment and supporting a healthy quality of life for the entire community.

Community Engagement

- A Port tour is an excellent interactive learning experience with content tailored for elementary, secondary and post secondary education levels.
- Community support is displayed by the Port through its presence at local events and support of local and institutional programs.
- The annual Banana Festival welcomes thousands of community members to experience the Port with tours, entertainment and educational displays. During the global pandemic, the Port has brought the Festival to our local communities through community food drives.
- The Port offers an award-winning 12-week Global Trade & Logistics class for high school students and partners with local universities to develop maritime education programs.
- In conjunction with local businesses and Port partners, the Port offers internship programs and hosts regular annual STEM events.
- The Port supports numerous nonprofits in our community through sponsorships, volunteerism, and leadership.



Port Governance

The Oxnard Harbor District was formed by voters in the election of 1937, thanks to the tenacity of Richard Bard and the citizens of Ventura County, who fought for the formation of a local port. Construction began in early 1939, and Bard, who was destined to be known as the “Father of the Port of Hueneme,” was asked to turn the first shovel. The harbor was officially opened on July 4, 1940.

Today, the Port of Hueneme is one of the most productive and efficient commercial trade gateways for niche cargo on the West Coast. It moves \$16 billion in goods each year and consistently ranks among the top ten U.S. ports for automobiles and fresh produce. Port operations support the community by bringing \$2.8 billion in economic activity and creating 24,997 trade-related jobs. Trade through the

Port of Hueneme generates more than \$236 million in direct and related state and local taxes which fund vital community services.

The Port is governed by five locally-elected Port Commissioners. The Oxnard Harbor District commission holds regular public meetings once a month.

MISSION: To operate as a self-supporting port that enforces the principles of sound public stewardship maximizing the potential of maritime-related commerce and regional economic benefit.

VISION: To be the preferred port for specialized cargo and provide the maximum possible economic and social benefits to our community and industries served.

Your Port of Hueneme Commissioners



Celina L. Zacarias
President



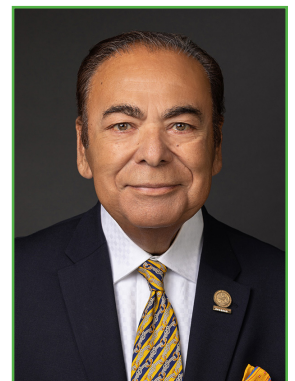
Jess J. Ramirez
Vice President



Jason T. Hodge
Secretary



Mary Anne Rooney
Commissioner



Jess J. Herrera
Commissioner

As of April, 2024



**The Port
OF Hueneme**

Oxnard Harbor District

Foreign Trade Zone #205



WORLD TRADE CENTER
OXNARD

333 Ponoma Street
Port Hueneme, CA 93041
Phone: 805-488-3677



www.portofh.org



The Port
OF Hueneme
Oxnard Harbor District



2024 Port of Hueneme

INFORMATION

Key Port Information

Harbor Depth	Entrance channel 40ft (12 m)
Channel Length	2,300 Lft (700 m)
Turning Basin	1,200 ft (365 m)
Largest Vessel	800 ft (244 m) LOA; 35 ft (10 m) depth, 40ft (12 m)
Tides	Average rise and fall approx 5.4 ft - 6 ft (1.65 m)
Anchorage	2 miles south of the Port Hueneme Lighthouse
On-Port Terminal	120 acres (Port owned)
	Up to 34 acres (joint use - Port leased)
Wharfs/Berthing	Wharf 1: Berths 1, 2 (900 Lft ea.) - Commercial cargo (183 m)
	Wharf 2: Berths 4, 5 (700 Lft ea.) - Commercial cargo (213 m)
	Berth 3: Fishing vessels
	Berth 6 (1,000 Lft joint use) - Commercial cargo (305 m)
	Wharf 4, 5, 6 (license agreement with Navy)
	1 shallow draft (320 Lft) - squid fishery (97 m)
	4 floats approx 600 ft of floating dock - small craft support vessels (183 m)
Short Haul Rail	13-mile short track (Class III) (19 km)
	Owned by Ventura County Railway, which is owned by the Port
	Operated by Genesee & Wyoming
Long Haul Rail	Connects to Union Pacific at Oxnard Interchange
Rail Yard	8 acre switchyard holds 99 boxcars or 80 auto racks
Off-Dock Navy Out Lease	130 acres (leased by Navy)
Port Parcel	5 acre off-Port property on Edison Ave (Port leased)
Off-Dock Private Parcels	279 acres privately owned Port industrial property
Refrigeration	93,000 SF on-dock (Del Monte)
	Off-site distribution centers (Anacapa Fresh 1 & 2, Channel Island Cold Storage, Chiquita, Mission Produce, Seaboard, Del Norte Distribution and Lineage Logistics) 1,000,000+SF temperature controlled facilities; transload operations including fumigation and reefer support; processing for fish industry, 299 reefer plugs on Port; 700+ off for total of over 1000
Cranes	5 mobile shore cranes available - 3 Ports America, 2 SSA Marine
Tugs	Brusco Tug & Barge (Port contracted)
Pilotage	Port Hueneme Pilots Association (Port contracted)
Labor	ILWU Local #46, Teamsters and Operating Engineers
Stevedores	Pacific Ro-Ro, Ports America and SSA Marine
Fuel	TracTide (Port contracted)
Security	Allied Universal (Port contracted)

Economic Impact



24,997

Jobs

Over 15,701 port-related jobs in Oxnard & Port Hueneme



\$2.8 Billion

Economy

Over \$2 billion into the economy annually



\$16 Billion

Annual Cargo

Over \$16 billion in Cargo value annually

FY 2022/2023

500 + Vessel Calls

2.4 million metric tons ocean freight

165,000 metric tons liquid bulk



\$236 Million

State and Local Taxes



\$1.6 Billion

Total Personal Income/Local Consumption



\$24.575 Million

City of Oxnard



\$5.445 Million

City of Port Hueneme

Port Footprint



Acreage

577 Acres – Entire seaport + all storage & processing areas

(FTZ authorized to operate under Alternative Site Framework, allowing up 2,000 acres countywide for site activation.)

Private Parcels – 125 acres of privately-owned Port industrial property

Navy Parcel – Up to 34 acres for commercial use (outlease by Navy)

Edison Site – 5 acre off-Port property (leased by Port to WW)

2001 Sunkist Circle – 13 Acre Off Port Property (leased by Port's Railroad to Limoneira Company)

Railway

13 Mile Short Line Track – Owned by Oxnard Harbor District

Contract with Genesee & Wyoming (largest short line operator in US)

Connects to Union Pacific in Downtown Oxnard

8 Acre Switchyard holds 99 box cars or 80 auto racks

Refrigeration

93,000 SF on-dock | 1,000,000+ SF off-dock (*private*) | 2000+ reefer plugs

FY2023 CARGO PERFORMANCE

Import/Export

All Cargo

2.4 million tons

Autos



Up 24%

Containers



Down 15%

Total Volume



Up 14%

Trading



Importers

- **Automobiles** (Aston Martin, BMW, General Motors, Honda, Hyundai, Jaguar, Kia, Land Rover, Maserati, MINI, Mitsubishi, Rolls Royce, Tesla, Subaru, Volvo, INEOS)
- **Fresh Produce** (Chiquita, Del Monte)
- **Heavy Equipment** (Case, Caterpillar, Hyster, John Deere, New Holland, Specialized Construction and Mining Equipment)
- **Liquid Bulk Fertilizer** (Yara North America)
- **Project and other Heavy-lift Cargos** (Case, Caterpillar, Hyster, John Deere, New Holland, Specialized Construction and Mining Equipment) Worldwide

Exporters

- **Automobiles** (Acura, Ford, General Motors, Honda, Nissan, Toyota, Tesla) to Asia
- **Fresh Produce** to Latin America
- **Heavy Equipment**

International Trading

South Korea, Germany, United Kingdom, Japan, Sweden, Guatemala, Belgium, Mexico, Slovakia, Peru, Costa Rica, China, Brazil, Austria, Denmark, Ecuador, Turkey, South Africa, Poland, Chile, Spain, Thailand, Portugal, Norway, Italy

Tenants, Customers & Users



Shipping Lines

- Champion Tankers
- Cool Carriers
- COSCO
- EUKOR Car Carriers
- Del Monte
- GLOVIS
- K-Line
- Mitsui OSK Lines
- Norbulk
- NYK Lines
- Siem Car Carriers
- Maersk Line
- Wallenius Wilhelmsen

Liquid Fertilizer

- Yara

DC & Warehousing

- Anacapa Fresh
- Channel Islands Logistics
- Channel Islands Warehousing
- Del Norte Warehousing
- Seaboard Produce
- Western Precooling
- Limoneira Cold Storage
- Freska Cold Storage
- Lineage Cold Storage

Produce

- Chiquita
- Del Monte
- Mission Produce

Auto Processing

- BMW
- GLOVIS
- WWS

Fish & Squid

- Oxnard Unloading Services
- Lunds
- Monterey Fish Co.
- Southern Cal Seafood

Service Providers

- Brusco Tug & Barge
- Lineage Logistics
- Marine Spill Response Corporation
- National Response Corporation

- OST Truck & Crane
- Port Hueneme Ice
- Port Hueneme Pilots Association
- Stevedores: Pacific Ro-Ro, Ports America, SSA Marine
- Securitas Security
- T&T Truck & Crane
- TracTide Marine Fuels
- Union Pacific RR
- G and W Shortline Rail
- MSRC
- NRC

Offshore Oil

- DCOR
- EXXON Mobile
- Freeport-McMoRan

Services

- Bunkering Fuel
- Chandlery
- Cold Storage
- Crane Service
- Stevedoring
- Railroad
- Marine equip/supplies
- Oil Spill Response & Recovery Services
- Warehousing





**The Port
OF Hueneme**
Oxnard Harbor District

INFORMATION



The Port of Hueneme is one of the most productive and efficient commercial trade gateways for niche cargo on the West Coast. As the only deep water port between Los Angeles and San Francisco, the Port is an important link of the supply chain for international trade in California and beyond. The Port is a hub for imports and exports for a variety of cargo including automobiles, tractors and heavy machinery, fresh fruit and produce, liquid fertilizer, and squid. The Port is owned by the Oxnard Harbor District, which is led by a five-member Board of Harbor Commissioners who are elected from the cities of Oxnard and Port Hueneme.

10-Year Strategic Plan Pillars



Economy

The Port contributes to the economic health of Ventura County, moving \$16 billion in goods each year, resulting in \$2.8 billion in economic activity. The Port creates more than 24,997 direct, indirect, induced and influenced jobs regionally. 3,451 direct workers (such as longshore workers, terminal operators and warehouse workers) reside throughout Ventura County.



Environment

The Port and its customers and partners take very seriously their role in protecting the environment. The Port's Environmental Management Framework (EMF) focuses on the goal of sustainability at the Port through management of air quality, marine resources, soil and sediment, water quality, energy, and climate change adaptation.



Community

The Port is committed to community through advocacy and support of social and institutional programs. The Port responded to the pandemic by organizing food distribution events; to date, the Port has distributed more than 1.2 million tons of produce and goods and has held over 73 events. The Port also offers tours to students and other community members, and holds a semester-long Global Trade and Logistics class, open to local high school students.



Infrastructure

Many projects are in process to modernize operations and technology in order to run the greenest, most efficient Port possible. The Port deepening project was completed, which increased Port capacity and replenished local beaches. Grants and other funding are being utilized to update infrastructure for projects such as shoreside power (where ships can plug in to electricity), and zero- and near-zero emissions cargo equipment.



Technology & Innovation

The Port hosts many programs intended to collaborate with STEM students and innovators in the County. The Port's on-site lab, FATHOMWERX (a partnership with Economic Development Collaborative, Matter Labs, and NAVSEA) invites entrepreneurs with an optimized solution incubator for sustained research, experimentation and test programs.

Ship Sizes

▶ **Car Ship (standard)** **650 ft x 100 ft**

Max capacity
5,000 to 7,500 cars
Typical shipment
1,000 to 3,000 cars

▶ **Fertilizer Ships** **600+ ft length**

Draw full 40 ft draft requiring
entry w/ high tide



FUN FACT #1

Port customers import enough bananas annually to circle the globe over 13 times!

▶ Largest Vessel - 800ft (244m) LOA; 40ft (12m) depth

▶ **Container Ships** **688 ft**

2,500 TEUS (1250 containers)
capacity per vessel
600+ Containers per vessel
60.4 million bananas

▶ **Weekly Averages**

5,000 TEUs
106 million bananas



FUN FACT #2

The Port of Hueneme is the 4th largest container port in California; our state is the 5th largest economy in the world!



FUN FACT #3

The Port of Hueneme was named the Greenest Port of the Year in 2017 by the International Green Shipping Summit!

Port Capabilities

As much as 40% of California's squid can come ashore at the Port

Liquid fertilizer ships carry up to 50,000 MT - enough to fertilize 100,000 acres

Car ships can carry up to 7,500 vehicles at a time



The Port can serve as O&M site for Offshore Wind power in the future.

The Port's cranes are capable of lifting up to 120 tons

The Port's tugs generate 100,000 lbs of omnidirectional thrust

Transit Times



Ecuador to Hueneme ▶ **7 days**
Costa Rica to Hueneme ▶ **5 ½ days**
Guatemala to Hueneme ▶ **5 days**

Korea to Hueneme ▶ **14 days**
Germany to Hueneme ▶ **25-28 days**

United Kingdom to Hueneme ▶ **24 days**
Hueneme to Mexico ▶ **3 days**
Belgium to Hueneme (Stop in UK) ▶ **30 days**
Panama Canal to Hueneme ▶ **5-6 days**